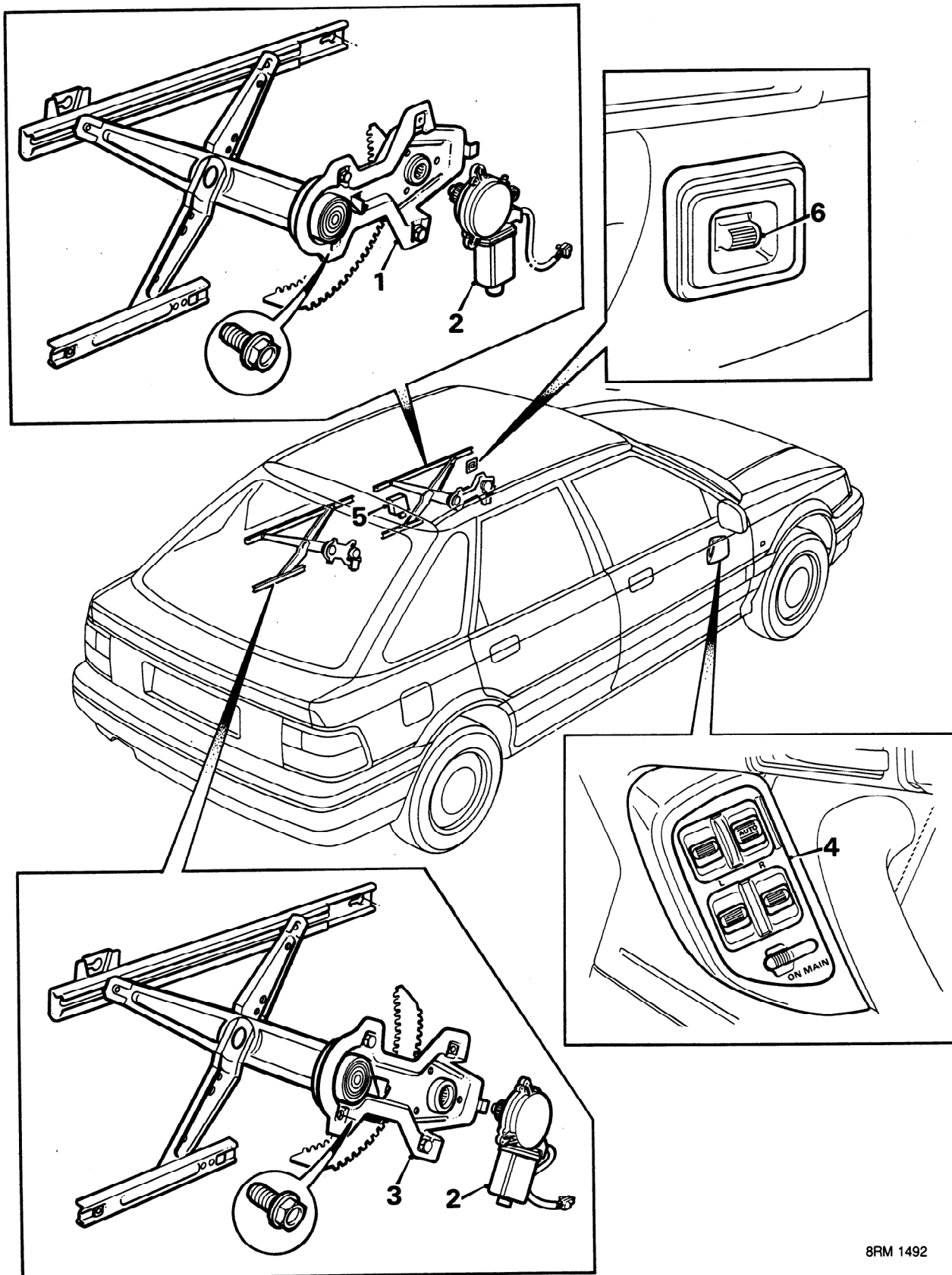


BODY

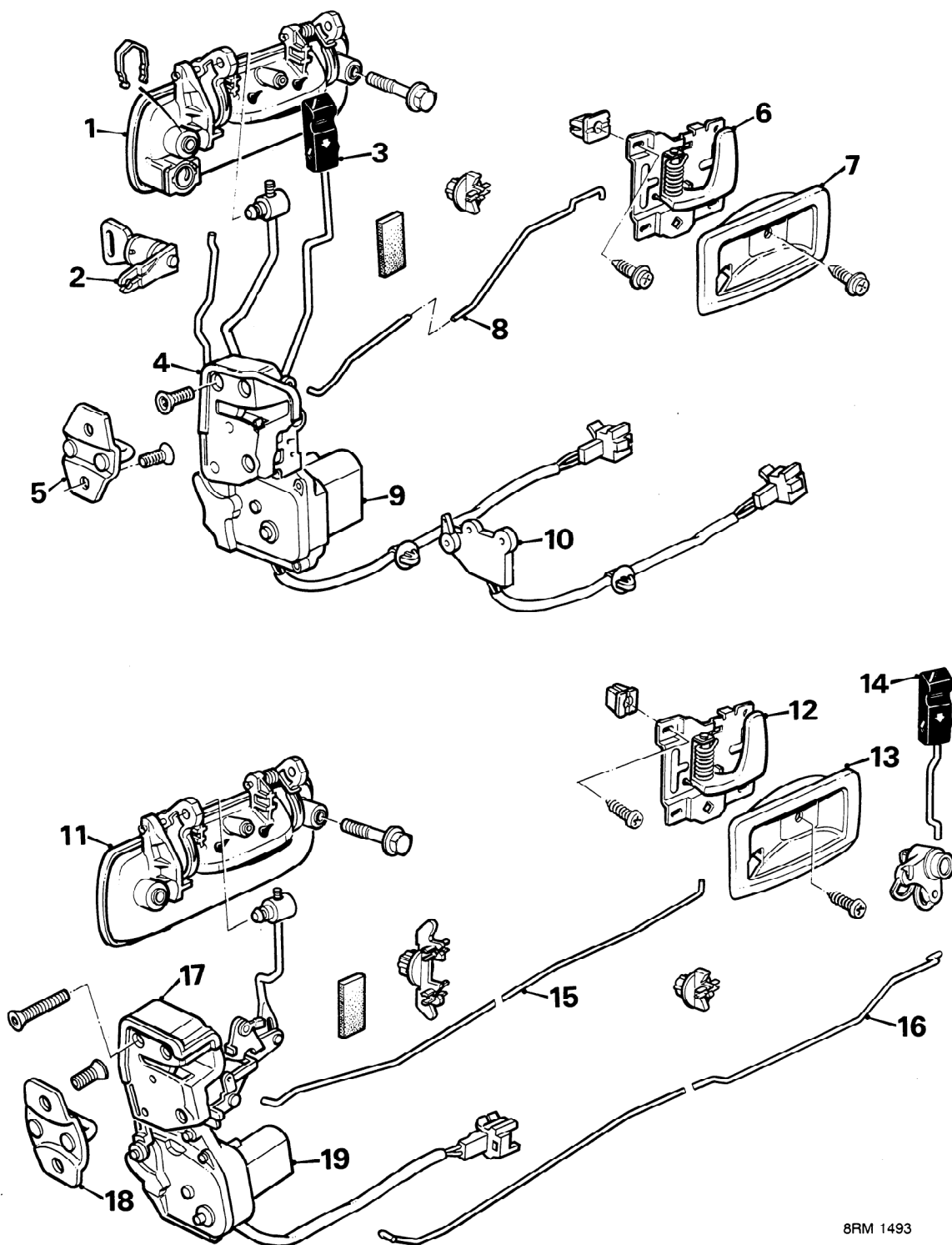


8RM 1492



**ELECTRIC WINDOW LIFT
COMPONENTS – NOT COUPE**

1. Front door glass regulator
2. Window lift motor
3. Rear door glass regulator
4. Master control switches – driver's door
4 window lift shown
5. Window lift control unit
6. Passenger's window switch



8RM 1493



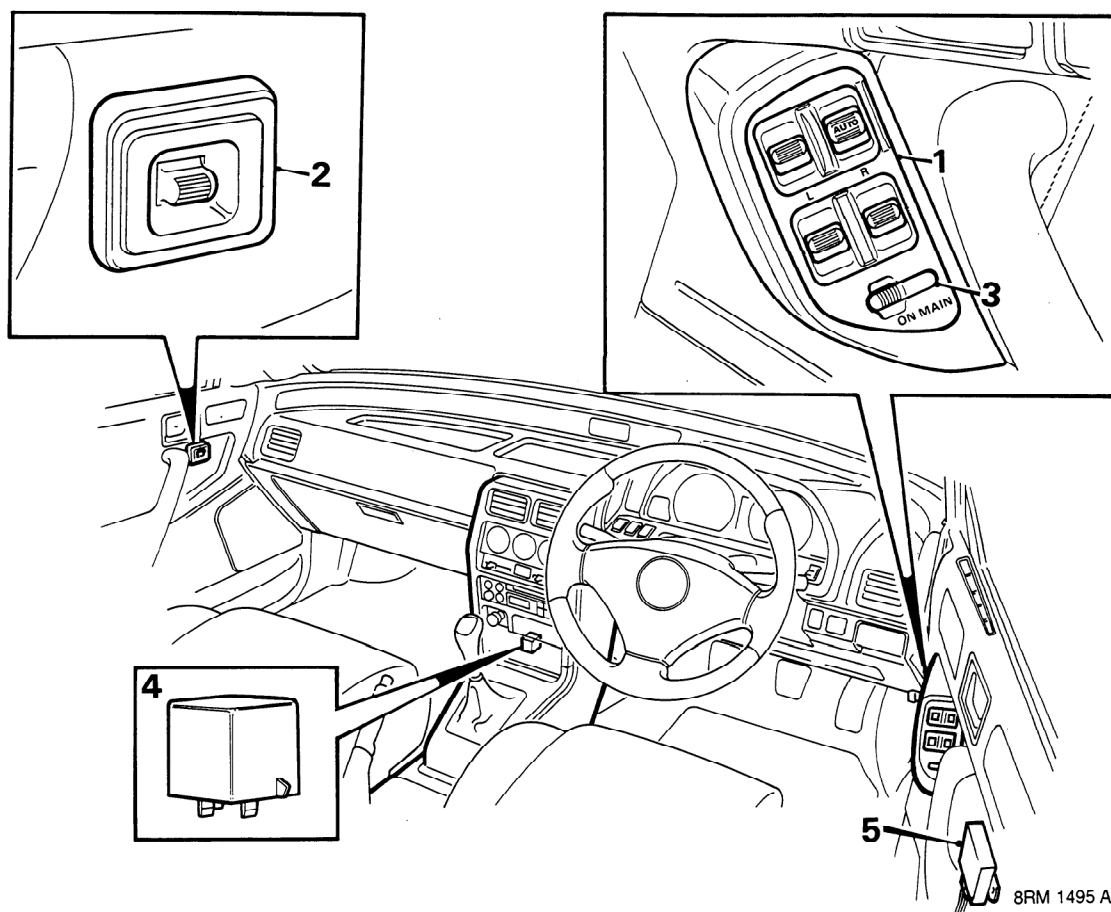
CENTRAL DOOR LOCKING COMPONENTS

Front door

1. Exterior handle
2. Private lock
3. Sill locking button
4. Door latch
5. Door lock striker
6. Interior handle
7. Interior handle escutcheon
8. Link rod – interior handle to door latch
9. Door lock motor – passenger's door
10. Door latch switch – driver's door

Rear door

11. External handle
12. Interior handle
13. Interior handle escutcheon
14. Sill locking button
15. Link rod – interior handle to door latch
16. Link rod – sill locking button to door latch
17. Door lock
18. Door lock striker
19. Door lock motor



8RM 1495 A

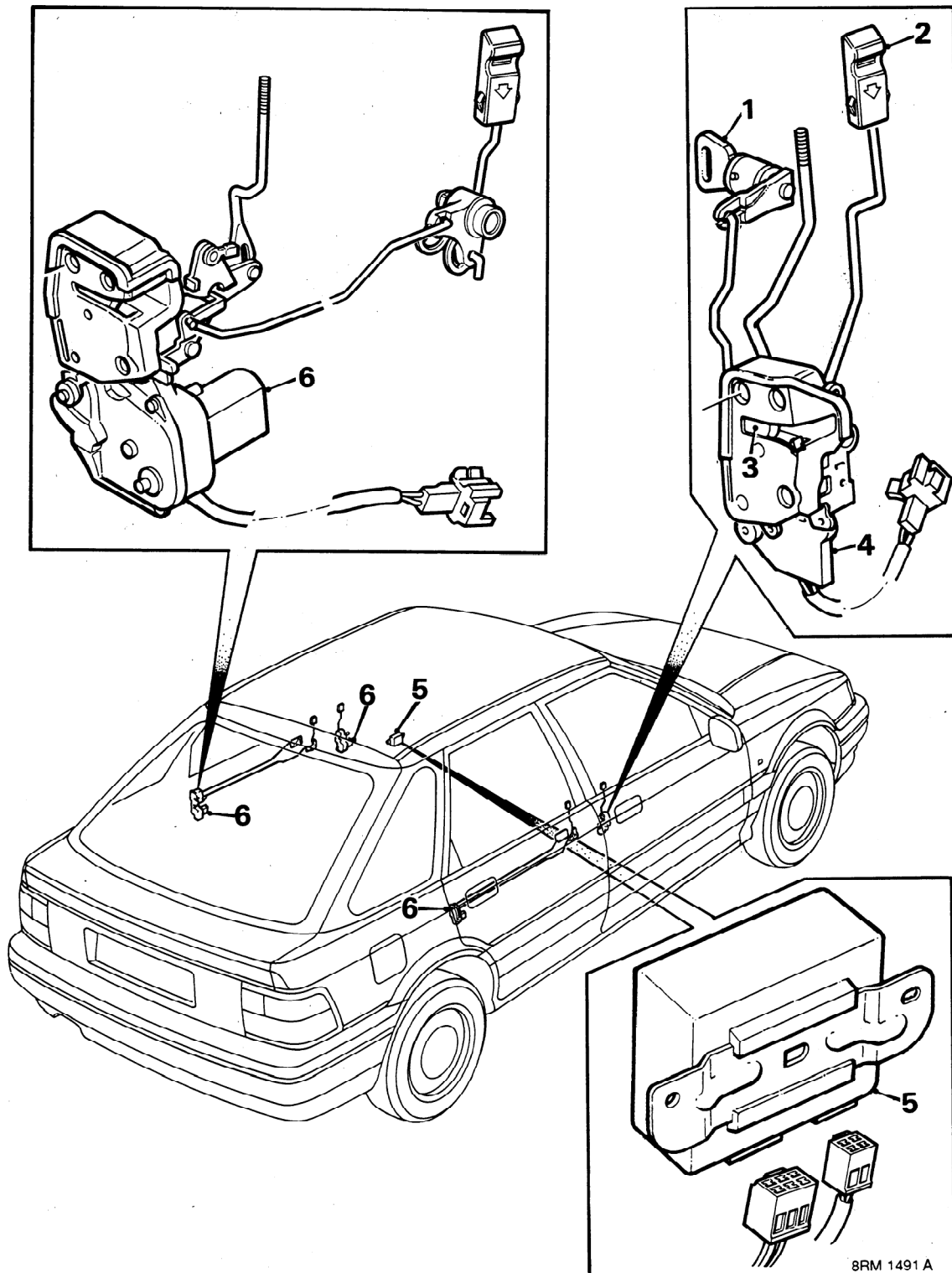
ELECTRIC WINDOW OPERATION

The four window lift system is controlled by switches fitted to each door trim pad. Master control switches (1) are incorporated in the driver's door which enable the driver to control all windows and to inhibit the operation of passengers' window switches (2) by switching off the 'MAIN' switch (3) as necessary.

The two window lift system has master control switches incorporated in the driver's door which enable the driver to control both front windows. A single window switch is fitted to the front passenger's door.

When the ignition is switched on, the electric window relay (4) located behind the centre console switches battery supply to the window circuit.

Battery supply from the electric window relay to the window lift control unit (5) and door window switches is via fuses (15 amp), one for each door, located in the passenger compartment fusebox.



ELECTRIC DOOR LOCK OPERATION

When the driver's door key (1) is turned or the sill button (2) is depressed to lock the drivers door, it mechanically locks the door latch (3) and triggers the latch switch (4) below the door lock. The latch switch makes an earth signal to the door locking control unit (5). When the control unit senses the earth signal, it operates the door lock motors (6) in the passenger doors thus locking them.

When the key is turned or the sill button is raised to unlock the driver's door mechanically, it again triggers the latch switch. The latch switch makes an earth signal to the door locking control unit. When the control unit senses this earth signal, it switches battery supply to operate the door lock motors (6) in the passenger doors thus unlocking them.

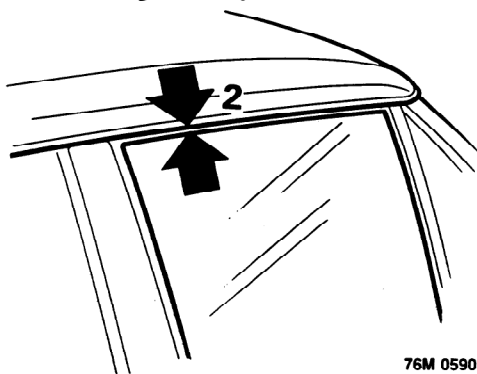
Note: There is no electric locking on the taildoor.

DOOR GLASS ADJUSTMENT - CABRIOLET

Service Repair No. 76.31.04

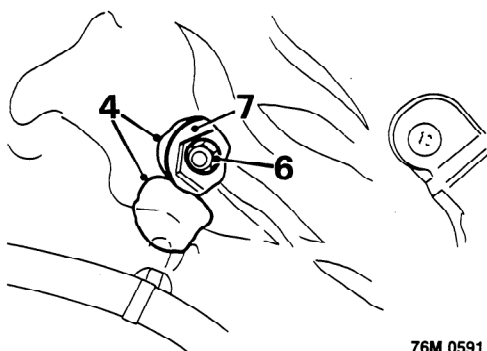
Adjust

1. Raise door glass fully and close door.



76M 0590

2. Check gap, top edge of door glass to hood material.
Door glass gap = 3mm
3. Remove door trim pad, see **Front door trim pad**.



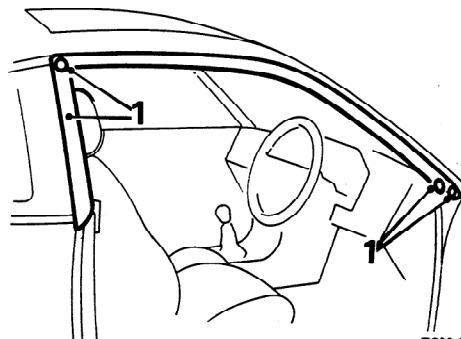
76M 0591

4. Locate adjustment hole in door panel and cut access flap in plastic sheet.
5. Lower door glass slightly to align adjustment cam hole.
6. Slacken adjustment cam locknut.
7. Rotate adjustment cam to correct glass height.
8. Tighten locknut.
9. Raise door glass fully and close door.
10. Recheck glass height.
11. Reseal plastic sheet.
12. Fit door trim pad, see **Front door trim pad**.

DOOR GLASS ADJUSTMENT - COUPE

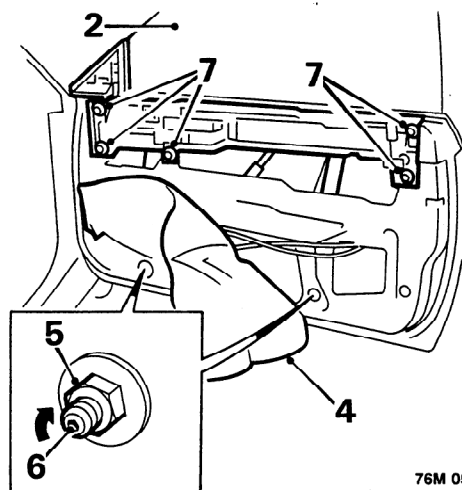
Service Repair No. 76.31.04

Adjust



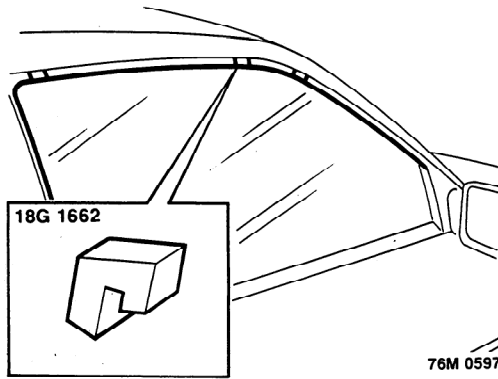
76M 0595

1. Release 3 studs securing door glass seal and remove seal.



76M 0596

2. Raise door glass fully.
3. Remove door trim pad, see **Front door trim pad**.
4. Release plastic sheet from door to reveal door cassette fixings.
5. Remove 2 nuts from cassette lower mounting points.
6. Turn alignment studs fully clockwise, using 4mm Allen key.
7. Slacken 5 upper mounting bolts.



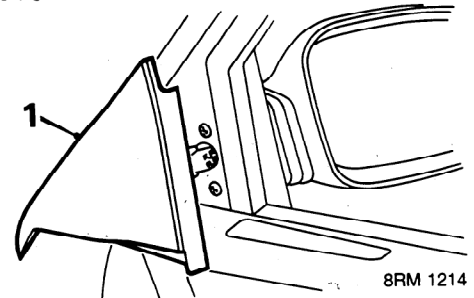
8. Fit 3 glass alignment blocks **18G 1662** to glass in positions shown.
9. Close door and attach suction cup lifters to glass.
10. With assistance, align top faces of alignment blocks to seal channel and tighten 2 upper mounting bolts to 25 Nm.
11. With assistance, press on top edge of door glass until side faces of blocks contact seal channel. Turn alignment studs until flanges just contact door inner panel.
12. Fit nuts to alignment studs. Hold studs with Allen key to prevent rotation whilst lower mounting nuts are tightened to 25 Nm.
13. Tighten remaining upper mounting bolts and tighten to 25 Nm.
14. Open door and remove alignment blocks.
15. Fit door trim pad, see **Front door trim pad**.
16. Fit door glass seal and secure studs.

FRONT DOOR TRIM PAD

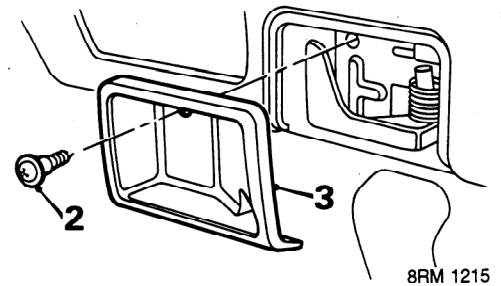
Service Repair No. 76.34.01

Service Repair No. Armrest 76.34.22

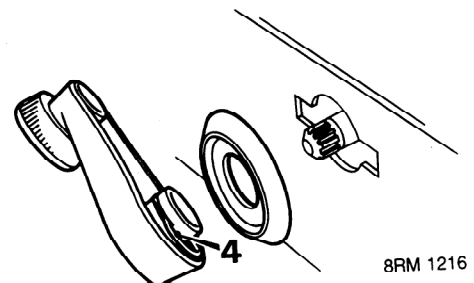
Remove



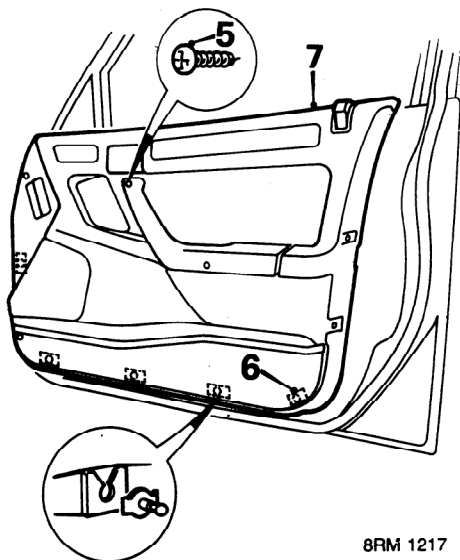
1. Open door, remove cheater panel from door.



2. Remove screw, interior door handle escutcheon.
3. Remove escutcheon.



4. *Manual window:* Release clip from between regulator handle and escutcheon using a wire hook, remove regulator handle and escutcheon.



8RM 1217

5. Remove 5 screws, trim pad to door.

Note: 4 door trim pad fixing shown.

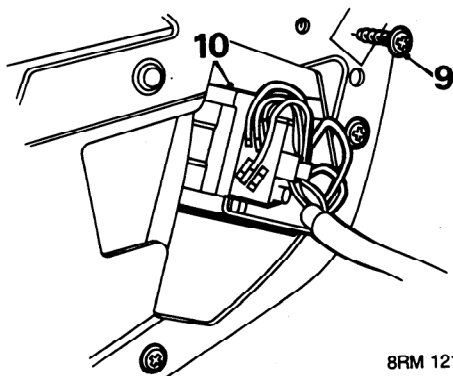
6. Release 5 studs, trim pad to door plugs.

7. Lift to disengage top edge and remove door trim pad.

8. *Electric window:* Disconnect 2 multiplugs from window lift switch panel – Driver's door.

Multiplug – Passenger's door .

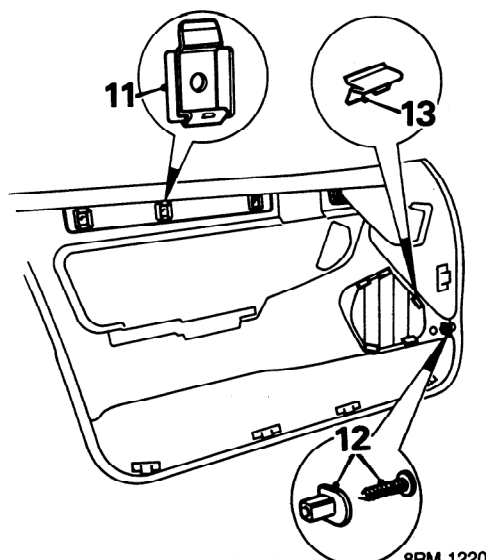
Do not carry out further dismantling if component is removed for access only



8RM 1218

9. Remove 3 screws, window switch housing to trim casing.

10. Remove window switch housing.

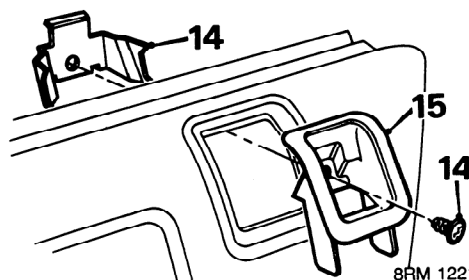


8RM 1220

11. Release clips and remove door capping inserts.

12. Remove screw, speaker grille to trim pad.

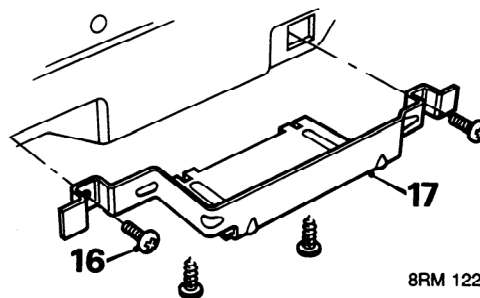
13. Release 3 clips and remove speaker grille.



8RM 1221

14. Remove screw and clip securing interior locking button bezel.

15. Remove interior locking button bezel.



8RM 1222

16. Remove 4 screws, arm rest bracket.

17. Remove arm rest bracket.

18. Remove arm rest.

19. Remove 5 retaining studs.

20. Transfer components removed to new trim pad.

Refit

1. Position trim pad to door.

2. *Electric window:* Connect 2 multiplugs to window lift switch panel – Driver's door. Multiplug – Passenger's door.

3. Engage top edge and press studs into engagement.

4. Fit and tighten screws, trim pad to door.



5. Fit interior handle escutcheon, tighten screw.
6. *Manual window:* Close window, fit regulator handle and escutcheon with handle at 45° above horizontal to rear. Press clip into place to engage slot in spindle.
7. Fit cheater panel.

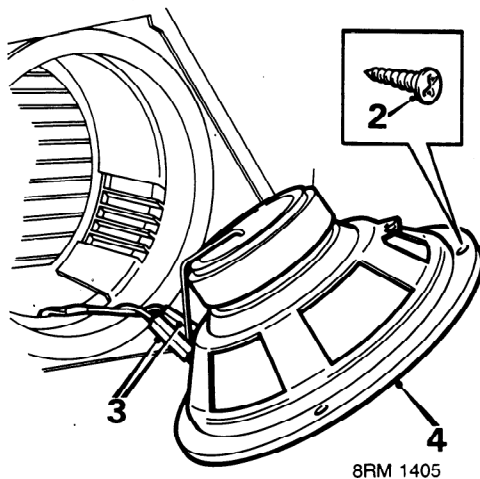
FRONT DOOR GLASS AND MANUAL REGULATOR

Service Repair No. Glass - 76.31.01

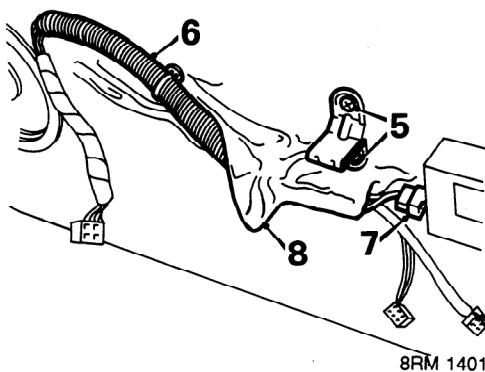
Service Repair No. Regulator - 76.31.45

Remove

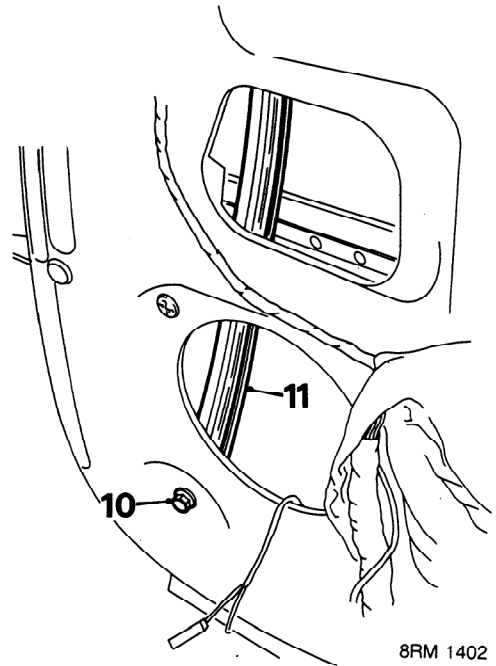
1. Remove door trim pad, see Front door trim pad.



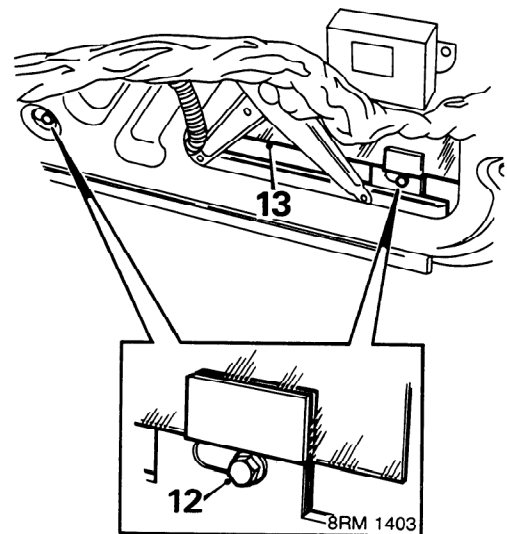
2. Remove 4 screws, speaker housing to door.
3. Disconnect 2 speaker Lucars.
4. Remove speaker.



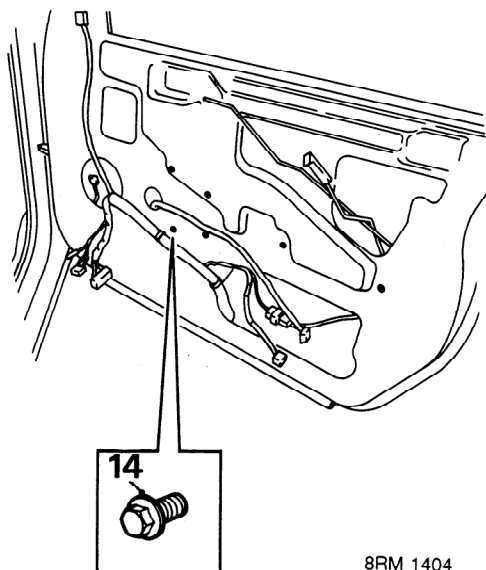
5. Remove 2 screws, arm rest support bracket to door and remove bracket.
6. *Central locking:* Release door harness from securing clips.
7. *Central locking:* Disconnect door lock multiplug.
8. Remove plastic sheet from door.
9. Wind regulator up or down for access to glass channel bolts.



10. Remove bolt, front glass channel to door.
11. Release channel from glass.



12. Remove 2 bolts, glass to window regulator.
13. Release glass from regulator and remove glass from door.



8RM 1404

Regulator

14. Remove 6 bolts, regulator to door.
15. Withdraw regulator from door.

Refit

1. Position regulator to door and align fixings.
2. Fit bolts to secure regulator, tighten bolts to 6 Nm.
3. Align regulator top slide to door and fit bolts, do not tighten.
4. Operate regulator to align top slide and tighten bolts to 6 Nm.
5. Enter glass into door, align glass to regulator.
6. Fit bolts to regulator and align glass.
7. Tighten glass to regulator bolts to 6 Nm.
8. Align front glass channel to glass.
9. Fit bolt glass channel to door.
10. Wind regulator up or down to align glass channel.
11. Tighten bolt front glass channel to door 6 Nm.
12. Fit plastic sheet to door and secure sheet edges to door.
13. *Central locking:* Connect door lock multiplug and secure harness clips to door.
14. Fit arm rest support bracket and tighten screws.
15. Connect Lucars, position speaker to door and tighten screws.
16. Fit door trim pad, see **Front door trim pad**.

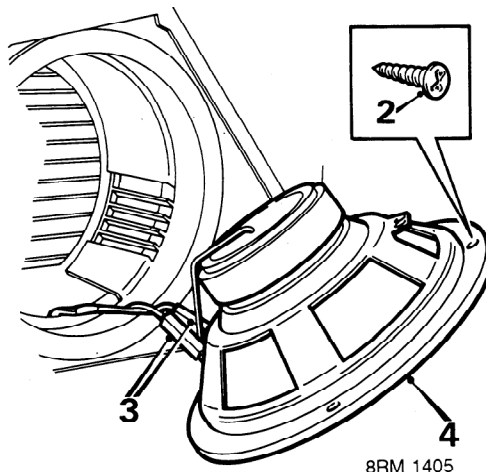
FRONT DOOR GLASS AND ELECTRIC REGULATOR – NOT COUPE

Service Repair No. Glass – 76.31.01

Service Repair No. Regulator – 76.31.45

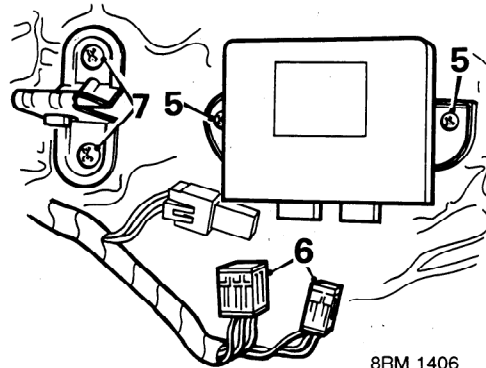
Remove

1. Remove door trim pad, see **Front door trim pad**.



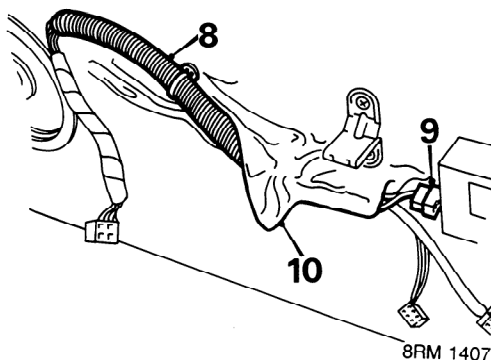
8RM 1405

2. Remove 4 screws, speaker housing to door.
3. Disconnect 2 speaker Lucars.
4. Remove speaker.

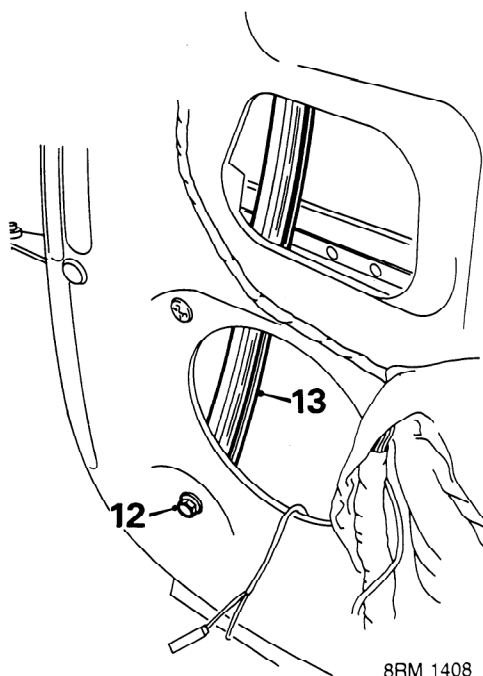


8RM 1406

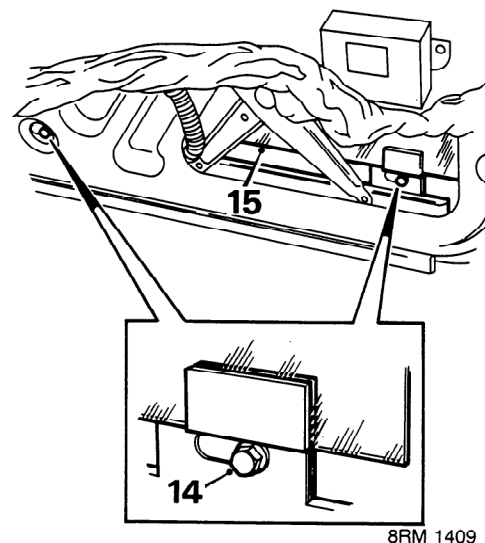
5. Remove 2 screws, window lift control to door.
6. Disconnect 2 multiplugs and remove control unit.
7. Remove 2 screws, arm rest support bracket to door and remove bracket.



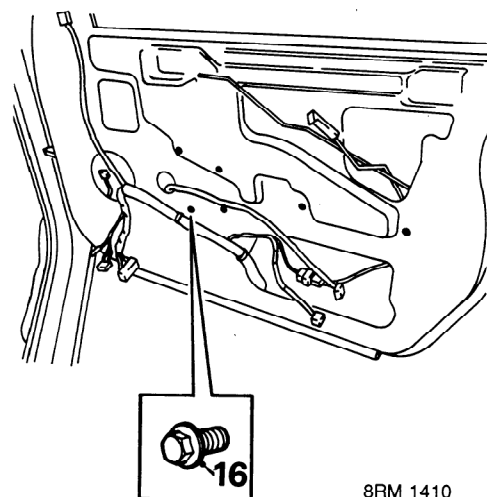
8. Release door harness from securing clips.
9. Disconnect door lock multiplug.
10. Remove plastic sheet from door.
11. Motor window up or down for access to glass channel bolts.



12. Remove bolt, front glass channel to door.
13. Release channel from glass.

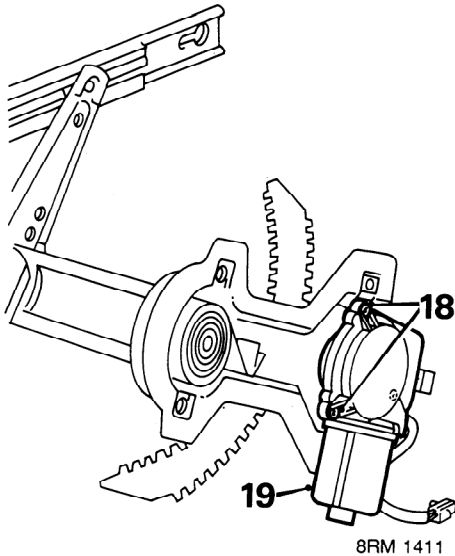


14. Remove 2 bolts, glass to window regulator.
15. Release glass from regulator and remove glass from door.



Regulator

16. Remove 6 bolts, regulator to door.
17. Withdraw regulator from door.



18. Drill out 3 rivets, motor to regulator.
19. Remove motor from regulator.

Refit

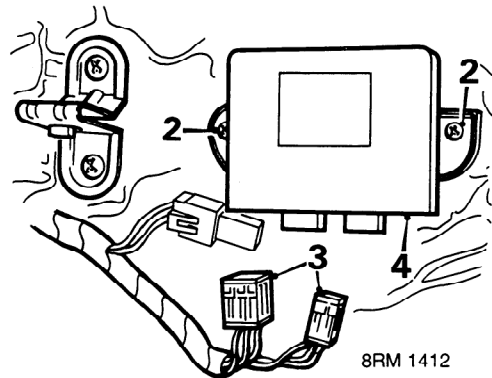
1. Position motor to regulator, fit rivets and peen over ends.
2. Position regulator to door and align fixings.
3. Fit bolts to secure regulator, tighten bolts to 6 Nm.
4. Align regulator top slide to door and fit bolts, do not tighten.
5. Operate regulator to align top slide and tighten bolts to 6 Nm.
6. Enter glass into door, align glass to regulator.
7. Fit bolts to regulator and align glass.
8. Tighten bolts glass to regulator 6 Nm.
9. Align front glass channel to glass.
10. Fit bolt glass channel to door.
11. Motor window up or down to align glass channel.
12. Tighten bolt front glass channel to door 6 Nm.
13. Fit plastic sheet to door and secure sheet edges to door.
14. Connect door lock multiplug and secure harness clips to door.
15. Fit arm rest support bracket and tighten screws.
16. Fit window lift control unit and connect multiplugs.
17. Fit screws control unit to door, tighten screws.
18. Connect Lucars, position speaker to door and tighten screws.
19. Fit door trim pad, see **Front door trim pad**.

ELECTRIC WINDOW SWITCH UNIT

Service Repair No. 86.25.39

Remove

1. Remove door trim pad, see **Front door trim pad**.



2. Remove 2 screws, control unit to door.
3. Disconnect 2 multiplugs from control unit.
4. Remove control unit.

Refit

1. Connect multiplugs to control unit.
2. Fit control unit to door and tighten screws.
3. Fit door trim pad, see **Front door trim pad**.

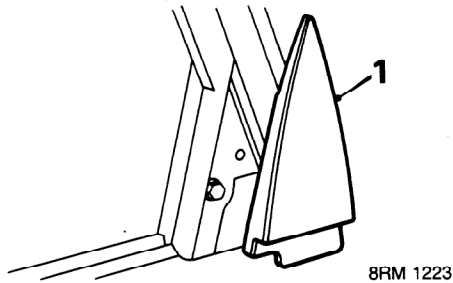


REAR DOOR TRIM PAD

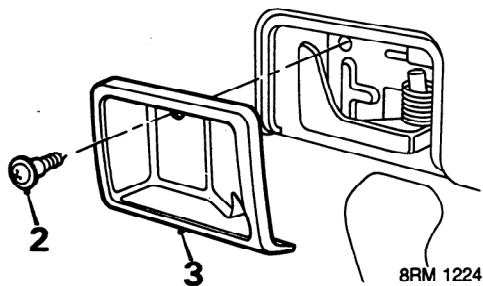
Service Repair No. Trim pad 76.34.04

Service Repair No. Armrest 76.34.23

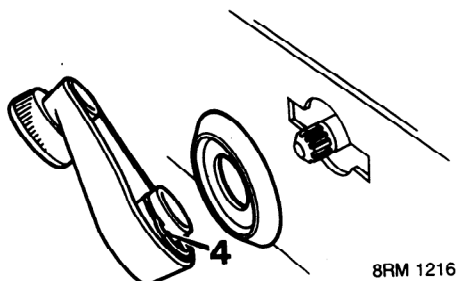
Remove



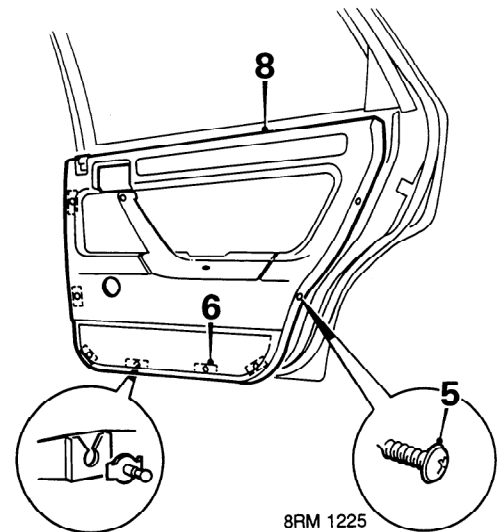
1. Open door, remove cheater panel from door.



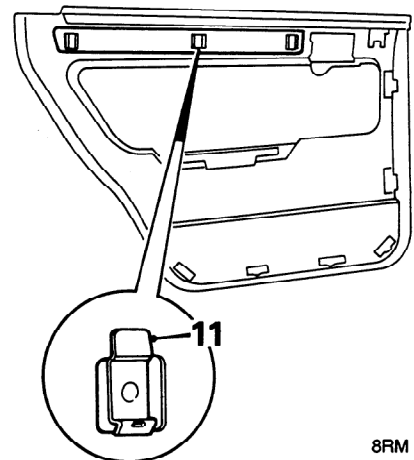
2. Remove screw, interior door handle escutcheon.
3. Remove escutcheon.



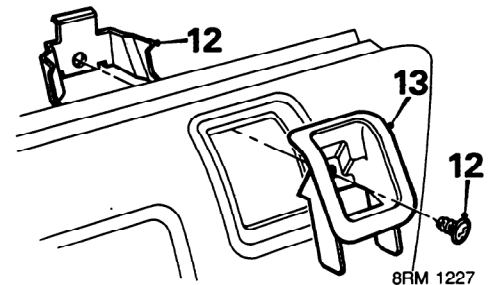
4. *Manual window:* Remove clip from between regulator handle and escutcheon using a wire hook, remove regulator handle and escutcheon.



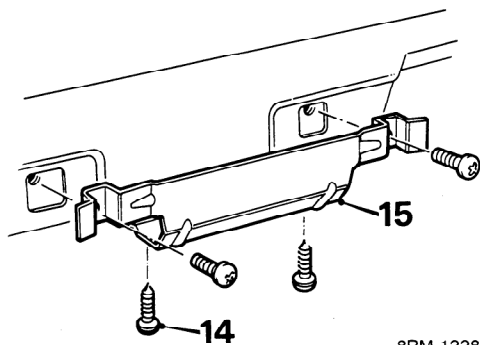
5. Remove 3 screws, trim pad to door.
6. Release 6 studs, trim pad to door plugs.
7. *Electric window:* Disconnect electric window lift multiplug.
8. Remove trim pad.
- Do not carry out further dismantling if component is removed for access only**
9. Remove 3 screws, window switch housing to trim pad.
10. Remove window switch.



11. Release clips and remove door capping inserts.



12. Remove screw and clip securing interior locking button bezel.
13. Remove interior locking button bezel.



14. Remove 4 screws, arm rest retaining bracket.
15. Remove arm rest bracket.
16. Remove arm rest.
17. Remove 6 retaining studs.
18. Transfer components removed to new trim pad.

Refit

1. Position trim pad to door.
2. *Electric window:* Connect window lift multiplug.
3. Engage top edge of trim pad and press studs into engagement.
4. Fit and tighten screws, trim pad to door.
5. Fit interior handle escutcheon, tighten screw.
6. *Manual window:* Close the window, fit regulator handle and escutcheon with handle at 45° above horizontal to rear. Press clip into place to engage slot in spindle.
7. Fit cheater panel.

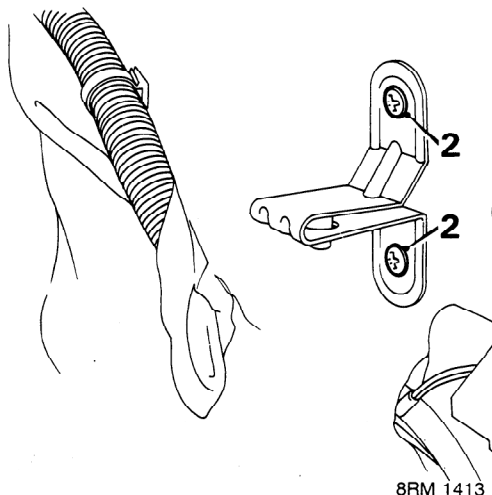
REAR DOOR GLASS AND MANUAL REGULATOR

Service Repair No. Glass - 76.31.02

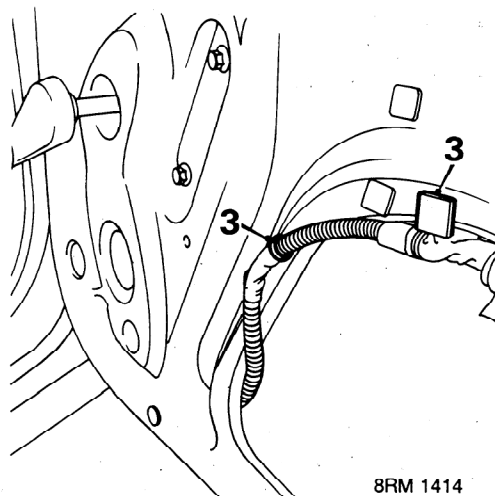
Service Repair No. Regulator - 76.31.46

Remove

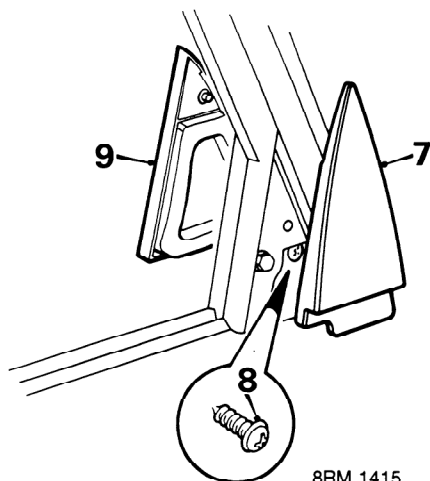
1. Remove door trim pad, see **Rear door trim pad**.



2. Remove 2 screws, arm rest support bracket to door and remove bracket.

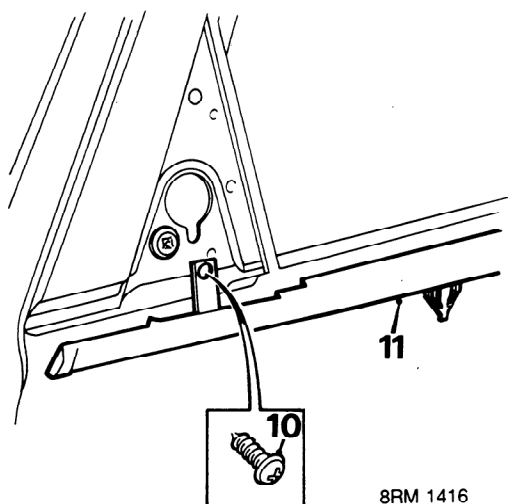


3. *Central locking:* Release clips securing harness to door.
4. *Central locking:* Disconnect door lock multiplug.
5. Remove plastic sheet from door.
6. Wind regulator up or down for access to glass channel bolts.



8RM 1415

7. Remove inner cheater panel.
8. Remove screw, outer cheater panel to door
9. Remove outer cheater panel.

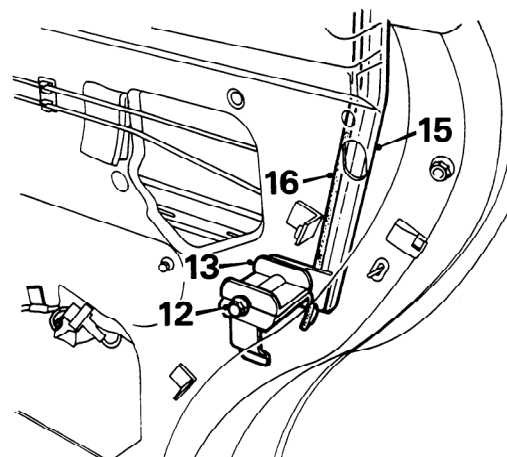


8RM 1416

Note: Do not remove waist seal or door glass if removing regulator.

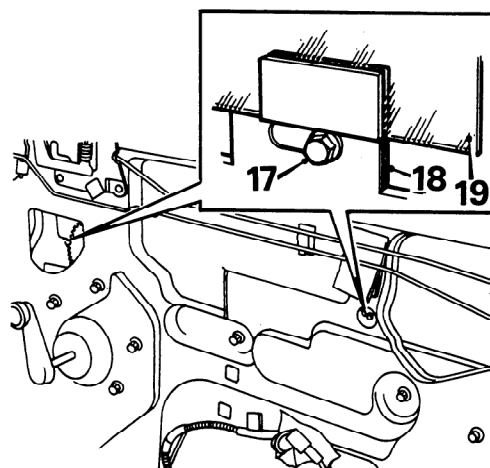
10. Remove screw from waist seal bracket.
11. Remove waist seal from door.

Note: Renew waist seal if damaged.



8RM 1417

12. Remove bolt rear channel to door.
13. Collect spacer.
14. Slacken nut rear channel to door frame.
15. Release channel from glass.
16. Release rubber from rear channel and remove rear channel from door.

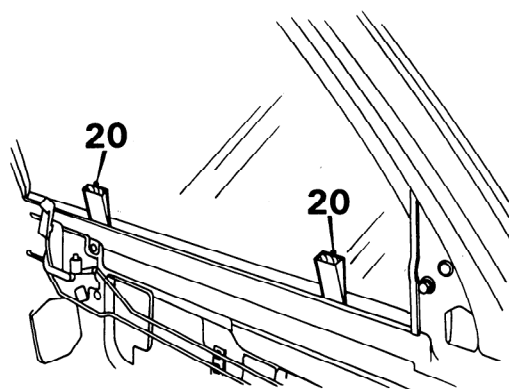


8RM 1418

17. Remove bolts glass to window regulator.
18. Release glass from regulator.

Glass

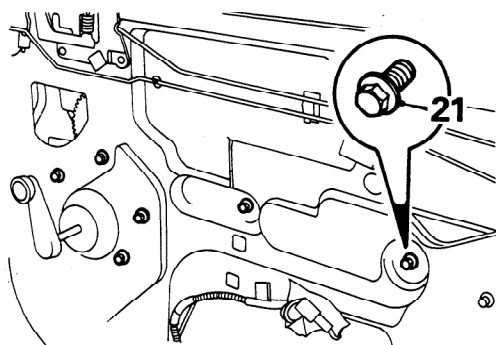
19. Remove glass from door.



8RM 1419

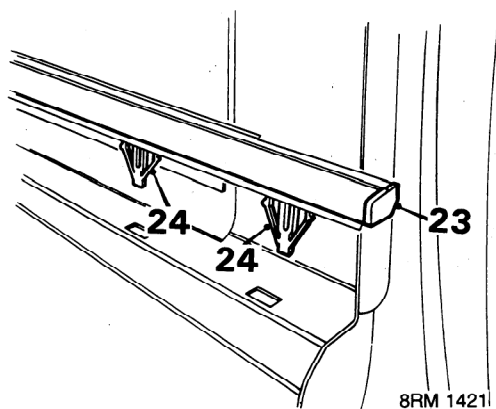
Regulator

20. Raise glass to top of door frame and fit wedges to retain glass.



8RM 1420

21. Remove 6 bolts, regulator to door.
22. Remove regulator from door.



8RM 1421

Waist seal

23. Remove front end cap from waist seal.
24. Remove retainer from end cap and slide clips from waist seal.
25. Fit new clips and end cap to waist seal.

Refit

Regulator

1. Position regulator to door and tighten bolts to 6 Nm.
2. Align regulator top slide to door and fit bolts, do not tighten.
3. Remove wedges retaining glass and lower glass to regulator.
4. Align glass to regulator, tighten bolts to 6 Nm.
5. Raise window fully to align top slide.
6. Fit regulator top slide bolts, tighten to 6 Nm.

Glass

7. Enter glass into door.
8. Align glass to regulator and fit bolts.
9. Tighten glass to regulator bolts to 6 Nm.
10. Fit rear channel to door.
11. Align rear channel to door and frame.
12. Fit rubber to rear channel.
13. Fit rear channel spacer and bolt to door, but do not tighten bolt.
14. Fit but do not tighten nut, channel to frame.
15. Wind regulator up or down to align glass channel.
16. Tighten bolt and nut, channel to door and frame to 6 Nm.

Door fittings

17. Fit the plastic sheet to door.
18. *Central locking:* Connect the door lock multiplug and secure harness clips to door.
19. Fit arm rest support bracket.
20. Fit and tighten screws, bracket to door.
21. Fit door trim pad, see **Rear door trim pad**.
22. Fit outer waist seal.
23. Fit inner and outer cheater panels.



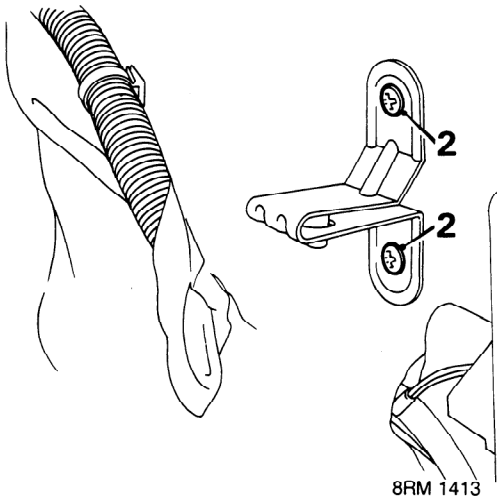
REAR DOOR GLASS AND ELECTRIC REGULATOR

Service Repair No. Glass - 76.31.02

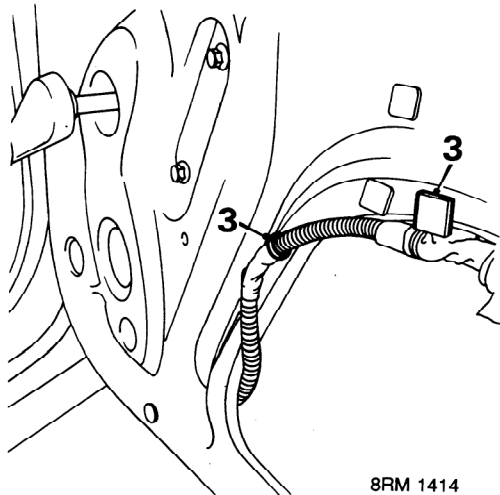
Service Repair No. Regulator - 76.31.46

Remove

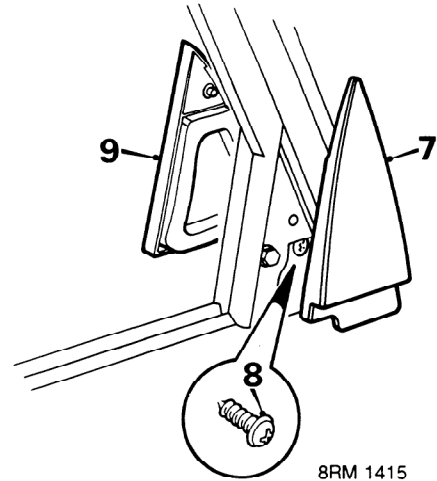
1. Remove door trim pad, see **Rear door trim pad**.



2. Remove 2 screws, arm rest support bracket to door and remove bracket.

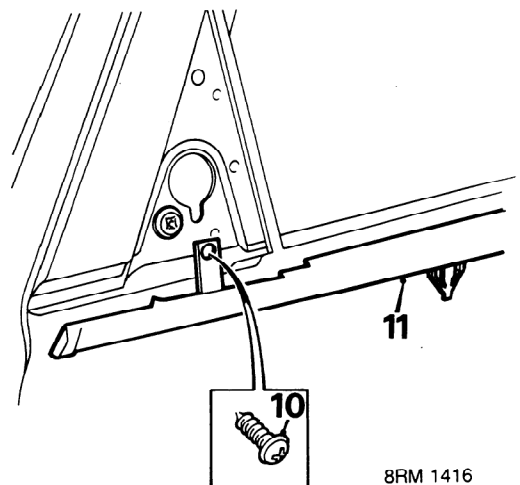


3. Release clips securing harness to door.
4. Disconnect door lock multiplug.
5. Remove plastic sheet from door.
6. Motor window up or down for access to glass channel bolts.



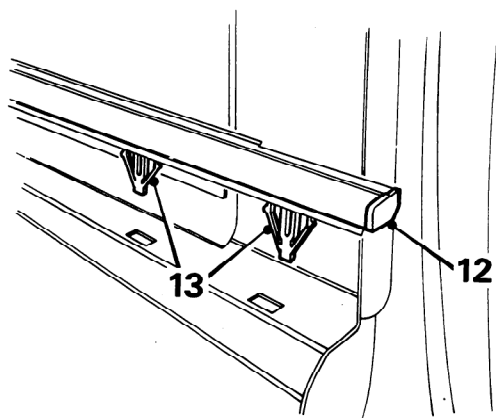
7. Remove inner cheater panel.
8. Remove screw securing outer cheater panel
9. Remove outer cheater panel.

Note: Do not remove waist seal or door glass if removing regulator.



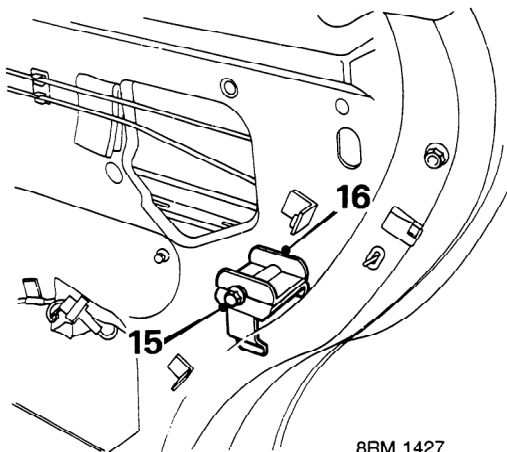
10. Remove screw from waist seal bracket.
11. Release waist seal from door.

Note: Renew waist seal if damaged.



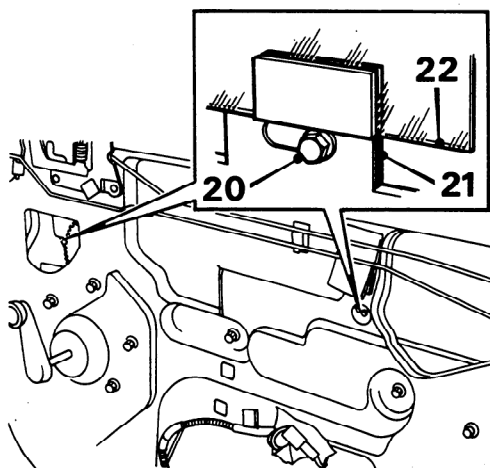
8RM 1426

12. Remove front end cap from waist seal.
13. Remove retainer from end cap and slide clips from waist seal.
14. Fit clips and end cap to waist seal.



8RM 1427

15. Remove bolt rear channel to door.
16. Collect spacer.
17. Slacken nut rear channel to door frame.
18. Release channel from glass.
19. Release rubber from rear channel and remove rear channel from door.



8RM 1428

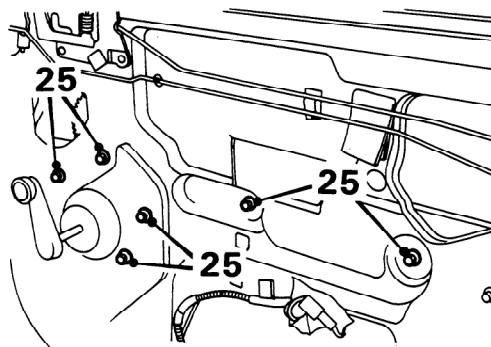
20. Remove bolts glass to window regulator.

Glass

21. Release glass from regulator.
22. Remove glass from door.

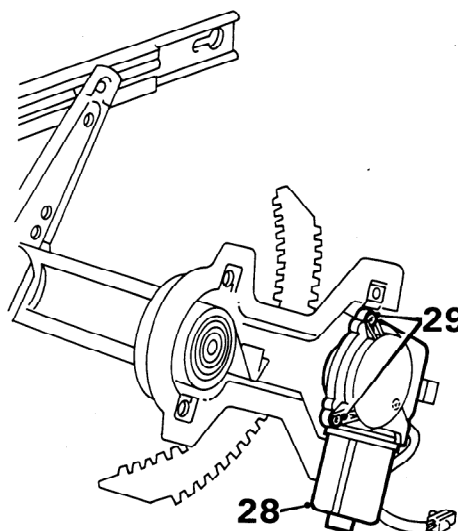
Regulator

23. Release glass from regulator.
24. Raise glass to top of door door frame and fit wedges to retain glass.



8RM 1430

25. Remove 6 bolts, regulator to door.
26. Withdraw regulator from door.



8RM 1431

27. Drill out 3 rivets, motor to regulator.
28. Remove motor from regulator.

Waist seal

29. Remove front end cap from waist seal.
30. Remove retainer from end cap and slide clips from waist seal.
31. Fit new clips and end cap to waist seal.

**Refit**

1. Fit motor to regulator.
2. Fit rivets motor to regulator and peen over ends.
3. Position regulator to door and tighten bolts to 6 Nm.
4. Align regulator top slide to door and fit bolts, do not tighten.
5. Remove wedges retaining glass and lower glass to regulator.
6. Align glass to regulator and tighten bolts to 6 Nm.
7. Raise window fully to align top slide.
8. Fit and tighten regulator top slide bolts to 6 Nm.

Window glass

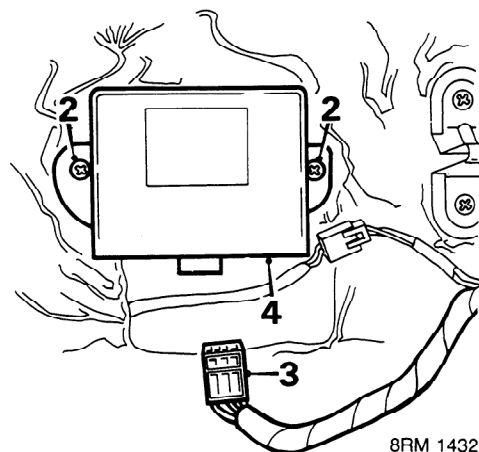
9. Enter glass into door.
10. Align glass to regulator and fit bolts.
11. Tighten bolts, glass to regulator.
12. Fit rear channel to door.
13. Align rear channel to door and frame.
14. Fit rubber to rear channel.
15. Fit rear channel spacer to door.
16. Fit but do not tighten bolt, channel to door.
17. Fit but do not tighten nut, channel to frame.
18. Motor window up and down to align glass channel.
19. Tighten bolt and nut, channel to door and frame.
20. Fit the plastic sheet to door.
21. Secure sheet edges to door.
22. Connect the door lock multiplug.
23. Secure harness clips to door.
24. Fit arm rest support bracket.
25. Fit and tighten screws, bracket to door.
26. Fit door trim pad, see **Rear door trim pad**.
27. Fit outer waist seal.
28. Fit inner and outer cheater panels.

CENTRAL DOOR LOCKING CONTROL UNIT

Service Repair No. 86.26.01

Remove

1. Remove passenger's front door trim pad, see **Front door trim pad**.



2. Remove 2 screws securing control unit to door.
3. Disconnect multiplug from control unit.
4. Remove control unit.

Refit

1. Connect multiplug to control unit.
2. Fit control unit to door and tighten screws.
3. Fit door trim pad, see **Front door trim pad**.

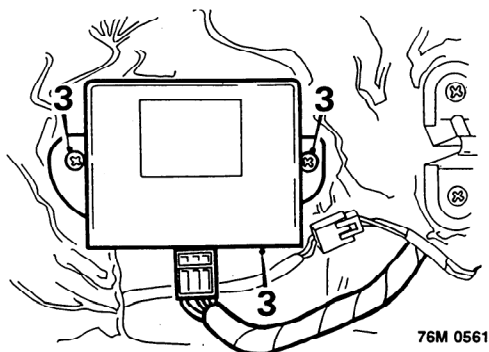
DOOR LATCH AND CENTRAL LOCKING MOTOR - FRONT

Service Repair No. Door latch 76.37.12

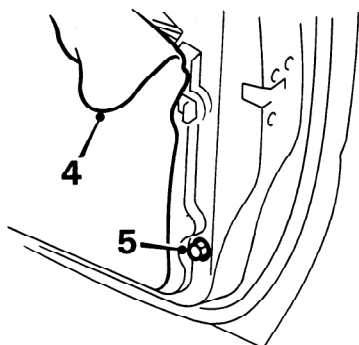
Service Repair No. Motor 86.26.08

Remove

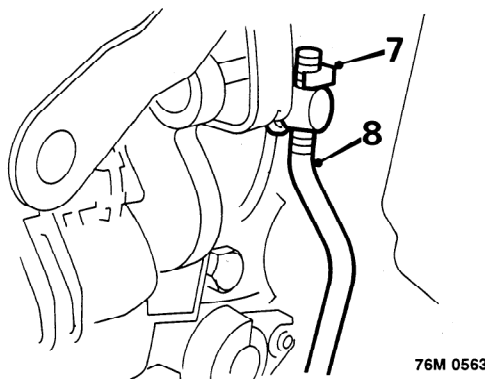
1. Fully close window.
2. Remove door trim pad, see **Front door trim pad**.



3. 4 and 5 door models - if fitted: Remove 2 screws securing window control unit and move unit aside.

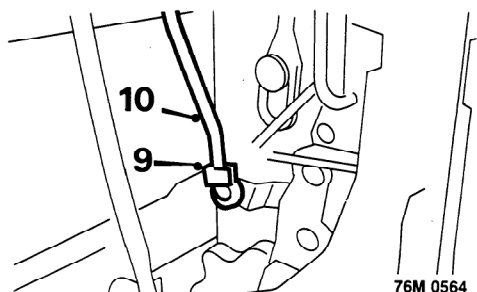


4. Release plastic sheet from rear of door.
5. *Not Coupe and Cabriolet*: Remove screw securing lower end of window rear guide channel to door.
6. *Cabriolet*: Remove 2 screws securing window rear guide channel, remove channel.

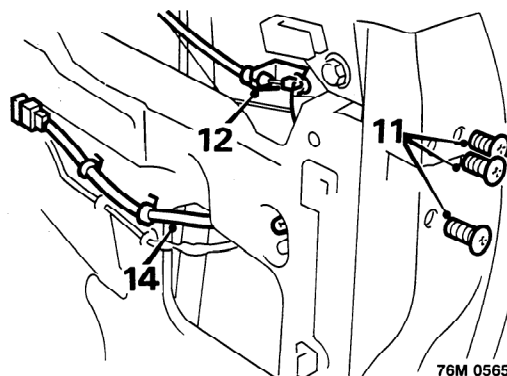


7. Raise exterior handle and release clip securing link rod to outside handle mechanism.
8. Release link rod from outside handle.

Note: Take care not to disturb setting of threaded link rod.



9. Release clip securing private lock link rod to door latch.
10. Release link rod from door latch.



11. Remove 3 screws and release latch from door.
12. Release clip securing interior handle link rod or cable to door latch.
Coupe: Release cable from abutment bracket.
13. Release interior handle link from door latch.
14. *Central locking*: Disconnect lock motor fly - lead; release multiplug and fly - lead clips from door.

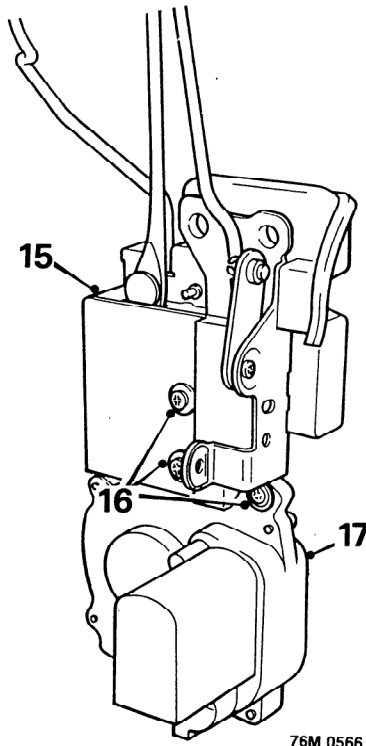


DOOR LATCH AND CENTRAL LOCKING MOTOR – REAR

Service Repair No. Door latch 76.37.13
Service Repair No. Motor 86.26.09

Remove

1. Fully raise window.
2. Remove door trim pad, see **Rear door trim pad**.



15. Remove door latch assembly.

Central locking

16. Remove 3 screws (TX10 Torx bit) securing lock motor to door latch.
17. Remove lock motor and spacer.

Refit

Central locking

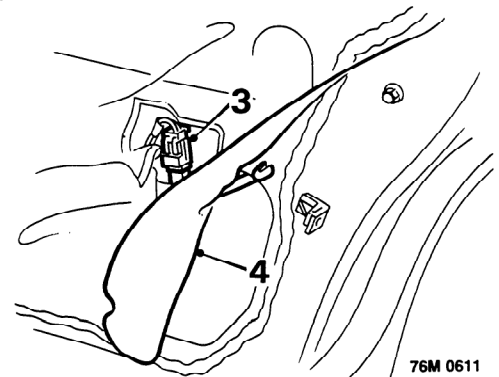
1. Fit spacer and secure lock motor to door latch, fit and tighten screws.

All models

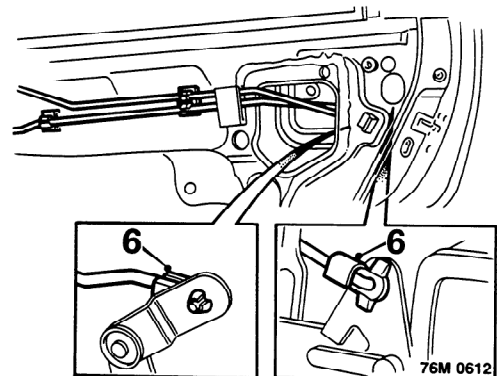
2. Position door latch assembly to door.
3. Connect link rods to latch and secure clips.
4. Raise outside handle, fit link rod to handle and secure clip.

Note: Ensure position of threaded link rod is not disturbed when connecting to outside handle.

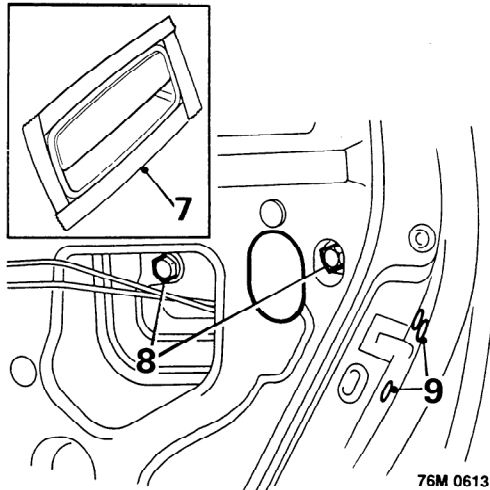
5. *Central locking:* Connect lock motor fly – lead; secure clips on fly – lead and connector to door.
6. Position latch assembly to mounting and tighten screws to 6 Nm.
7. *Not Coupé or Cabriolet:* Loosely fit screw to guide channel.
8. *Cabriolet:* Fit window rear guide channel and loosely fit screws.
9. Lower and raise window, tighten guide channel screws.
10. Position plastic sheet to door.
11. *4 and 5 door models – if fitted:* Position window control unit to door, fit and tighten screws.
12. Fit door trim pad, see **Front door trim pad**.



3. Disconnect multiplug from motor fly – lead and release connector clip from door.
4. Release plastic sheet from rear of door.
5. Release motor fly – lead clip from door.

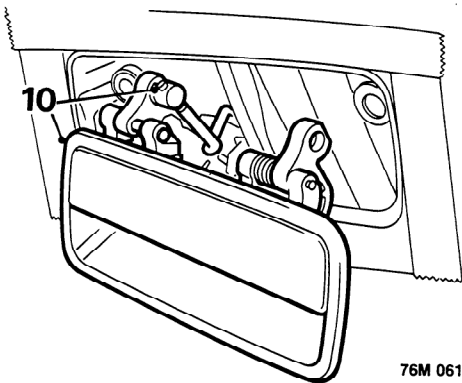


6. Release clips securing sill button and interior handle link rods; release link rods from latch.



76M 0613

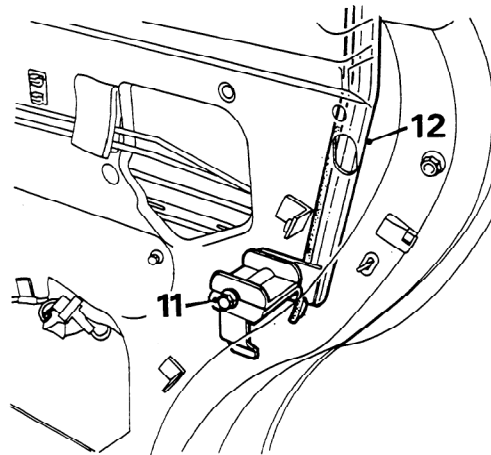
7. Protect paintwork around exterior handle with masking tape.
8. Remove tape over access hole in door and remove 2 bolts securing exterior handle to door.
9. Remove 3 screws securing latch assembly to door.



76M 0614

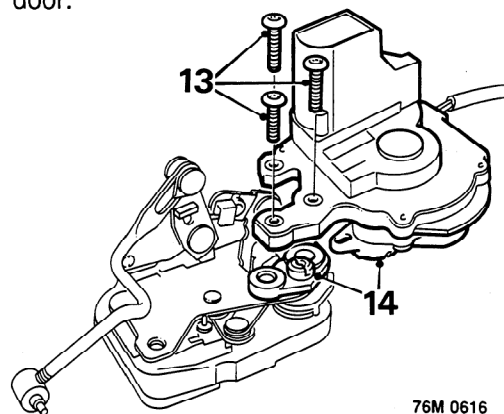
10. Release exterior handle from door, disconnect link rod and remove handle.

CAUTION: Take care not to disturb setting of threaded link.



76M 0615

11. Remove screw securing lower end of window rear guide channel and collect channel spacer.
12. Move rear guide channel aside to ease access and remove latch assembly from door.



76M 0616

Central locking motor

13. Remove 3 screws securing motor to latch.
14. Remove motor and collect spacer.



Refit

Central locking motor

1. Fit spacer and motor to latch.
2. Secure motor to latch with screws.

All models

3. Position latch assembly to door and secure link rod to exterior handle.

CAUTION: Take care not to disturb setting of threaded link.

4. Position exterior handle to door aperture and secure with screws.
5. Fit link rods to latch and secure clips.
6. Fit tape over access hole.
7. Secure latch to door with screws.
8. Secure motor fly – lead clip to door.
9. Fit spacer to window rear guide channel and fit bolt finger tight.
10. Temporarily fit window regulator handle, then lower and raise window to centralise channel before tightening bolt.
11. Connect motor fly – lead and secure connector clip to door.
12. Fit plastic sheet to door.
13. Fit door trim pad, see **Rear door trim pad**.

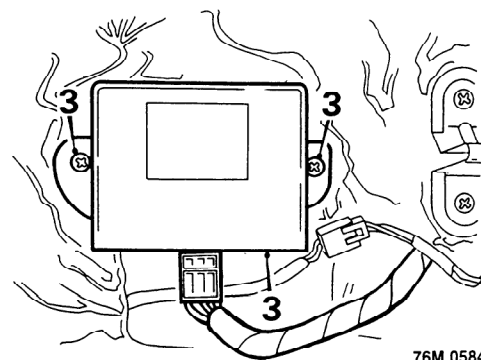
PRIVATE DOOR LOCK

Service Repair No. 76.37.39

Note: Later models only have a private door lock in the drivers door.

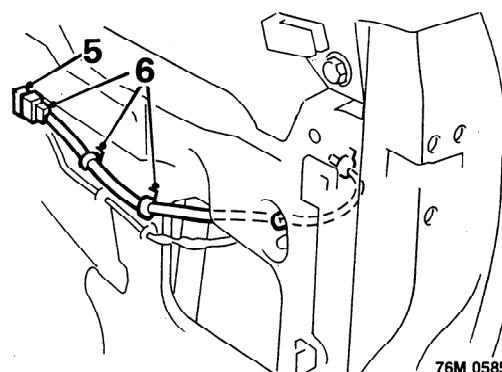
Remove

1. Fully raise window.
2. Remove door trim pad, see **Front door trim pad**.



76M 0584

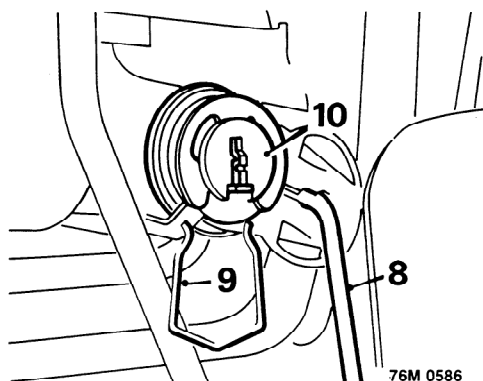
3. 4 and 5 door models: Remove 2 screws securing window control unit, if fitted, position unit aside.
4. Release plastic sheet from rear of door.



76M 0585

Central locking

5. Disconnect multiplug from door lock switch fly – lead.
6. Release multiplug and fly – lead clips from door.



All models

7. Using a suitable flat bladed screwdriver, release tags securing link rod to private lock.
8. Release link rod from private lock.
9. Remove wire clip securing private lock to outside handle.
10. Remove private lock.

Refit

1. Fit wire clip to outside handle.
2. Fit private lock.
3. Connect link rod to private lock, secure tags.

Central locking

4. *Not Coupé*: Route private lock fly - lead behind window rear guide channel.
5. Secure fly - lead and connector clips to door.
6. Connect multiplug to fly - lead.

All models

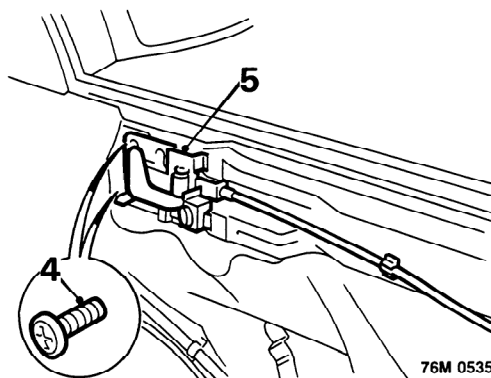
7. Attach plastic sheet to door.
8. *4 and 5 door models*: Position control unit, if fitted, fit and tighten screws.
9. Fit door trim pad, see **Front door trim pad**.

DOOR GLASS CASSETTE - COUPE

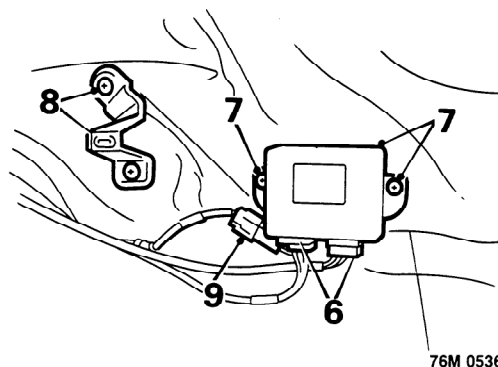
Service Repair No. 76.31.03

Remove

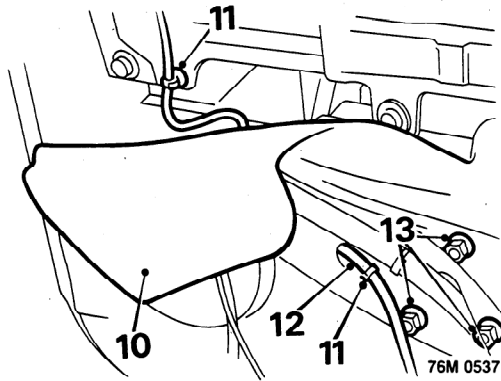
1. Raise window fully.
2. Remove door mirror, see **Door mirror**.
3. Remove door trim pad, see **Front door trim pad**.



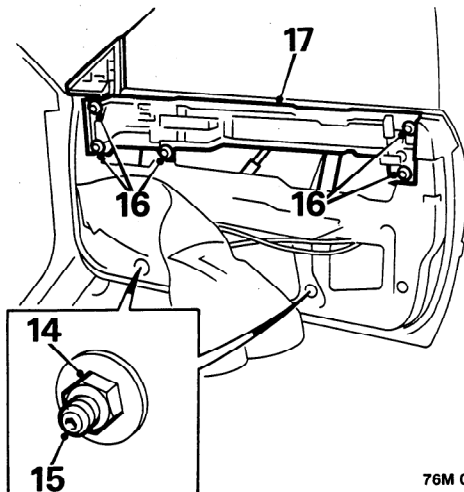
4. Remove 2 screws securing interior handle to door.
5. Release handle from door, disengage cable from clip and place handle aside.



6. Disconnect multiplugs from window control unit.
7. Remove 2 screws and remove window control unit.
8. Remove 2 screws and remove trim pad bracket.
9. Release multiplug clip from door.



10. Release plastic sheet from door panel.
11. Release door mirror and window motor harness clips from door.
12. Thread motor harness through door inner panel.
13. Remove 3 screws securing window motor and release motor from door.



14. Remove 2 nuts from glass cassette lower mounting points.
15. Turn alignment studs fully clockwise, using a 4mm Allen key.
16. Remove 5 bolts from cassette upper mounting points.
17. With assistance, remove cassette assembly from door.

CAUTION: DO NOT lift door cassette using cheater panel as it is set to close tolerances during assembly and may move out of alignment.

Refit

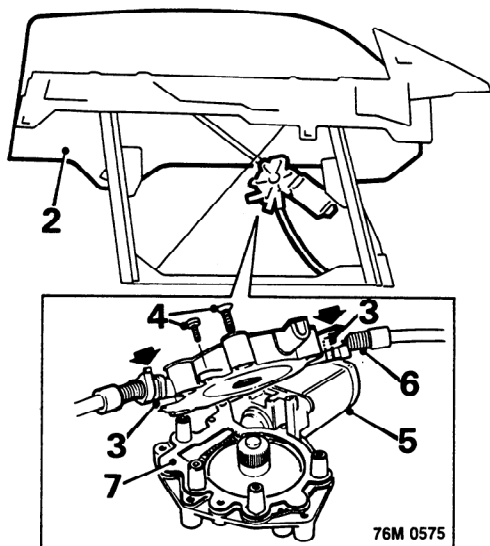
1. With assistance, fit cassette assembly to door.
2. Fit upper mounting bolts, finger tight.
3. Fit nuts to lower mounting points, finger tight.
4. Fit window motor to door and tighten nuts.
5. Adjust door glass to aperture, see **Door glass adjustment - Coupe**
6. Secure mirror harness clip to door.
7. Route window motor harness through door inner panel and secure harness clip.
8. Fit plastic sheet to door.
9. Secure multiplug clip to door.
10. Fit trim pad bracket and tighten screws.
11. Fit window control unit and tighten screws.
12. Connect multiplugs to window control unit.
13. Fit interior handle, tighten screws and secure cable in clip.
14. Fit door mirror, see **Door mirror**.
15. Fit door trim pad, see **Front door trim pad**.

WINDOW MOTOR – COUPE

Service Repair No. 86.25.04

Remove

1. Remove door glass cassette, see **Door glass cassette – Coupe**.



2. Place cassette assembly, glass side downwards, on soft working surface.
3. Secure cover to cable drum assembly with small cable ties prior to removing fixings.
4. Remove 5 Torx screws (TX25 Torx bit) and 3 cross-head screws securing motor to cable and drum assembly.
5. Remove window motor.
6. Remove flexible coupling and splined drive from cable drum assembly.
7. Remove gasket.

Refit

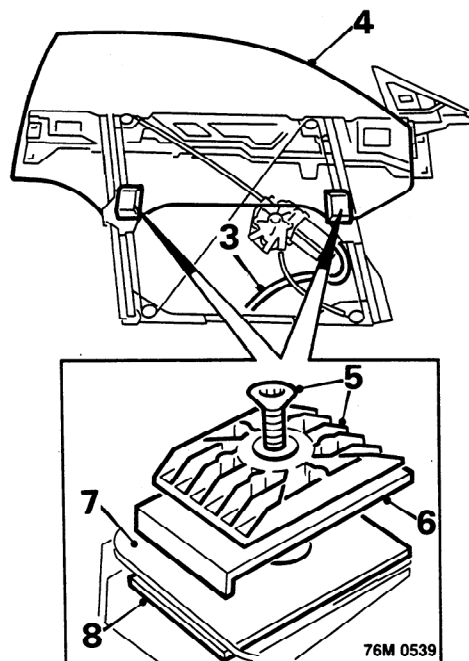
1. Fit gasket to motor.
2. Ensure correct location of worm wheel, flexible coupling and splined drive in window motor.
3. Fit motor to cable drum assembly and tighten screws.
4. Remove cable ties securing cover to cable drum.
5. Fit door glass cassette, see **Door glass cassette – Coupe**.

DOOR GLASS – COUPE

Service Repair No. 76.31.01

Remove

1. Remove door glass cassette, see **Door glass cassette – Coupe**.
2. Place cassette on a clean work surface, glass side upwards.



3. Connect a 12V battery to cable coloured:
Red/Yellow (R/Y) – Driver's side
Red/Blue (R/U) – Passenger's side

Note: Reversing the connections will change the direction of motor drive.

4. Motor door glass to half open position.
5. Remove screws (TX40 Torx bit) and remove glass clamp plates.
6. Remove clamp plate plastic shims.
7. Remove door glass.
8. Remove lifting plate plastic shims.

Note: The lifting plate shims may have metal spacer shims attached. If this is the case, ensure that shims are kept with their respective lifting plates.



Refit

1. Clean clamp plates and shims.
2. Fit shims to lifting plates.
3. Fit glass to lifting plates.
4. Fit clamp plate shims and clamp plates.
5. Fit clamp plate screws and tighten to 14 Nm.
6. Using assistance, position cassette assembly upright and drive glass up toward cheater plate. Check for correct alignment as glass enters seal channel of cheater plate.

Alignment incorrect

7. Drive glass to half open position.
8. Remove clamp plates, shims and glass.
9. Place steel spacer shims beneath top or bottom of lifting plate plastic shims to rectify any misalignment of glass to cheater plate.

CAUTION: Ensure that spacer shims are retained with Loctite 401 adhesive or equivalent. Both lifting plate shims must be fitted with same number of spacer shims, placed in identical positions, or glass may be unduly stressed.

10. Refit glass, clamp plate shims and clamp plates.
11. Tighten clamp screws to 14 Nm before raising glass and rechecking glass to cheater alignment.

Alignment correct

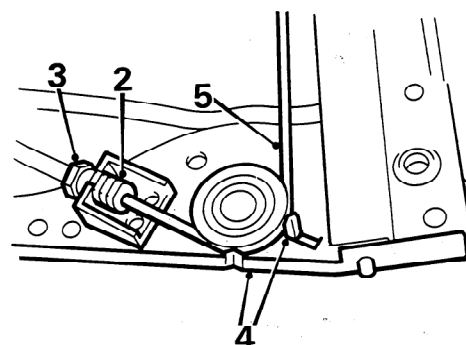
12. Drive glass to fully raised position.
13. Check glass edge is flush to top edge of cheater seal. If necessary, slacken clamp plate screws, adjust glass position and tighten screws to 14 Nm.
14. Fit door glass cassette, see **Door glass cassette - Coupe**
15. Adjust door glass to aperture, see **Door glass adjustment - Coupe**.

CABLE AND DRUM ASSEMBLY - COUPE

Service Repair No. 76.31.61

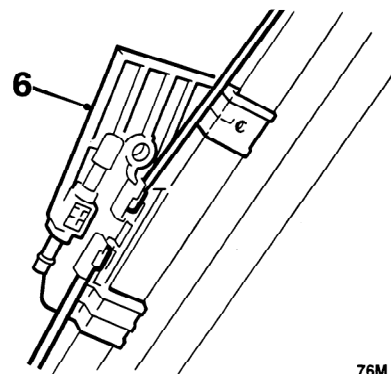
Remove

1. Remove door glass, see **Door glass - Coupe**.



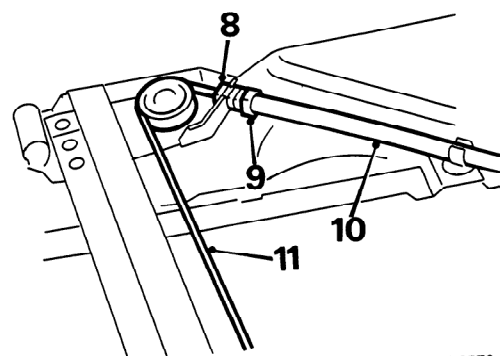
76M 0576

2. Note position of cable outer to abutment on front runner.
3. Rotate retainer through 90° and release outer cable from front runner abutment.
4. Bend tabs back from BLUE pulley wheel.
5. Release cable from BLUE pulley.



76M 0577

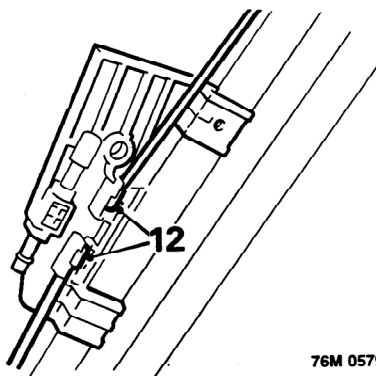
6. Release front lifting plate from runner.
7. Release inner cable from GREEN pulley on front runner.



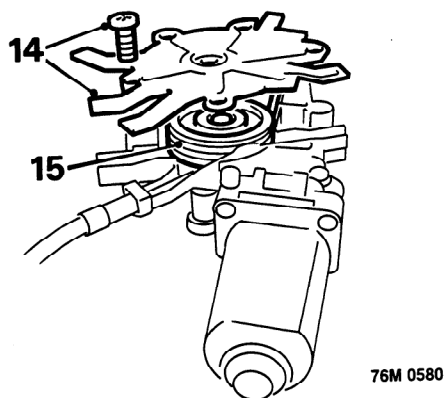
76M 0578

8. Note position of cable outer to abutment on rear runner.
9. Rotate retainer through 90° and release outer cable from rear runner abutment.
10. Release cable outer from clip.

11. Release cables from both pulleys on rear runner.



12. Release cable nipples from rear lifting plate.
13. Mark cable exit points on cable drum cover plate.

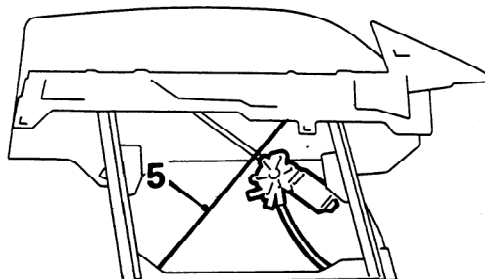


14. Remove 5 screws (TX25 Torx bit) and remove cover plate from cable drum.
15. Remove cable and drum assembly.

Note: If assembly is to be refitted, ensure that cable do not become displaced from drum.

Refit

1. Remove cover from new drum assembly, ensuring that cables do not become displaced.
2. Insert drum in motor body, ensuring that cables are placed in original exit points.
3. Fit cover to cable drum and tighten screws.
4. Locate cable outers in cable and drum assembly.



5. Route cables over GREEN pulleys and locate cable nipples in rear lifting plate.

CAUTION: Ensure that diagonal cable run is positioned over motor assembly cable, as shown. Motor assembly between cable and glass.

6. Engage cable outer, in original position, to rear runner abutment and secure by turning retainer through 90°.
7. Secure cable outer in clip.
8. Position rear lifting plate to runner.
9. Engage cable over BLUE pulley.
10. Position cable outer to abutment in original position and turn retainer through 90°.
11. Bend steel tabs to secure cable around BLUE pulley.
12. Fit door glass, see **Door glass - Coupe**.

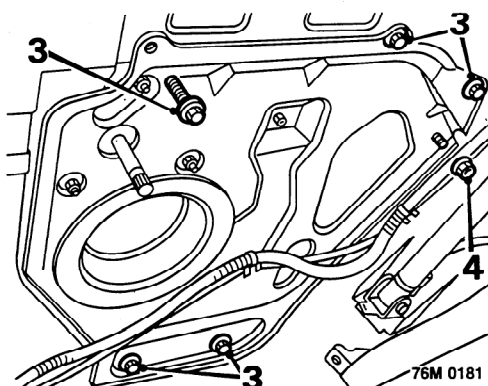


REAR WINDOW REGULATOR - CABRIOLET

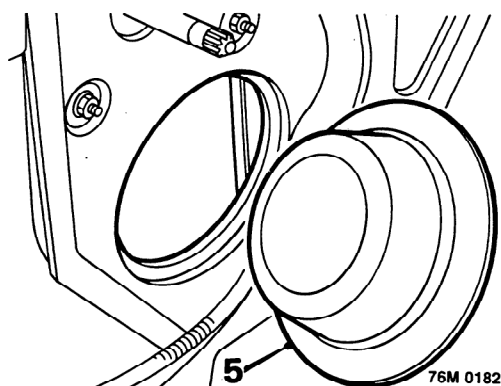
Service Repair No. 76.81.51

Remove

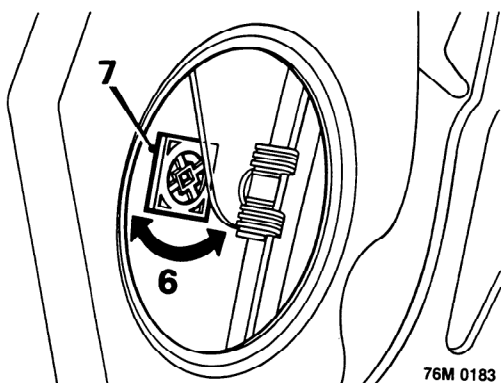
1. Remove rear quarter trim panel, see **Rear quarter trim panel - Cabriolet**.
2. Temporarily fit rear window regulator handle and lower window by approximately 100mm.



3. Remove 5 bolts securing rear window regulator mounting plate to body.
4. Remove nut from rear of regulator mounting plate, securing rear guide channel to mounting plate.

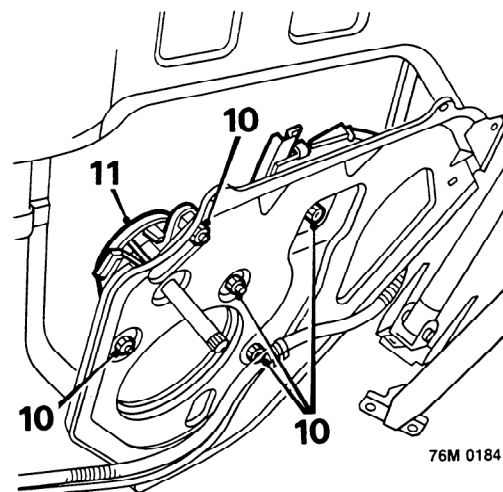


5. Remove speaker splash guard.



6. Reach through speaker aperture and disengage square locking plate, which secures rear window glass to regulator spigot, by turning through 45°.
7. Remove square locking plate from regulator spigot.

8. Carefully push on glass around fixing point to disengage glass from regulator spigot.
9. Place a suitable wedge between glass and waist seal to prevent glass from falling into rear quarter.



10. Remove 5 nuts, securing regulator assembly to mounting plate.
11. Move mounting plate away from body side and remove regulator assembly.

Refit

1. Fit rear window regulator assembly to mounting plate.
2. Fit regulator securing screws
3. Position regulator mounting plate and fit securing bolts.
4. Fit nut, securing rear guide channel to mounting plate, but do not tighten.
5. Reach through speaker aperture and engage grommet in the glass over the regulator spigot.

CAUTION: Ensure grommet does not become dislodged from glass during above operation.

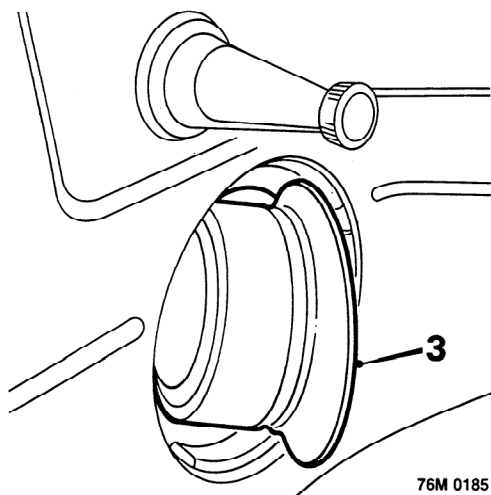
6. Fit square locking plate over regulator spigot and secure by turning locking plate through 45°.
7. Fit speaker splash guard.
8. Remove wedge supporting glass.
9. Temporarily fit rear window regulator handle, then fully raise and lower glass to centralise rear guide channel.
10. Remove regulator handle.
11. Tighten rear guide channel securing nut.
12. Fit rear quarter trim panel, see **Rear quarter trim panel - Cabriolet**.

REAR WINDOW GLASS - CABRIOLET

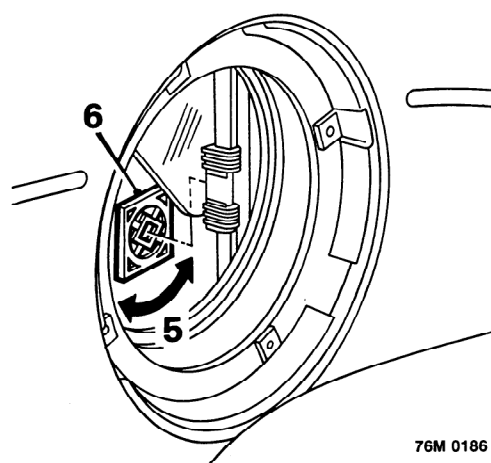
Service Repair No. 76.81.50

Remove

1. Lower hood.
2. Remove rear speaker, see **ELECTRICAL - Repairs.**



3. Remove speaker splash guard from rear window regulator mounting plate.
4. Wind rear window down approximately 100mm to ease access to glass fixing point.

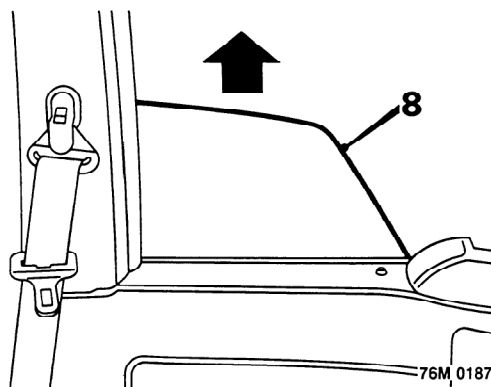


5. Reach through speaker aperture and disengage square locking plate, which secures glass to regulator spigot, by turning through 45°.
6. Remove square locking plate from regulator spigot.

CAUTION: Take care not to drop square locking plate behind rear quarter trim panel.

7. Carefully push on glass around fixing point to disengage glass from regulator spigot.

CAUTION: Do not allow glass to drop into rear quarter once spigot is released.



8. Remove glass by sliding it upwards and out through top of forward guide channel.

Refit

1. Locate glass into top of forward guide channel.
2. Feed glass carefully down into both guide channels, ensuring that slider on forward edge of glass locates correctly in forward guide channel.
3. Engage grommet in the glass over the regulator spigot.

CAUTION: Ensure that grommet does not become dislodged from glass during above operation.

4. Fit square locking plate over regulator spigot and secure by turning locking plate through 45°.
5. Fit speaker splash guard.
6. Fit rear speaker, see **ELECTRICAL - Repairs.**
7. Raise and secure hood.